

## Moving Melling railway station creates opportunity

The RiverLink project and Metlink are exploring moving the Melling railway station south of its current location. As part of our investigations, we recently looked at what moving the station would mean for current and future users of the station.

### Why the station needs to move

The reasons for shifting the railway station cut across the three main aspects of RiverLink: Making Places, flood prevention and the Melling intersection improvements. Close inter-agency collaboration ensures that RiverLink as a whole can maximise the opportunities created by moving the station.

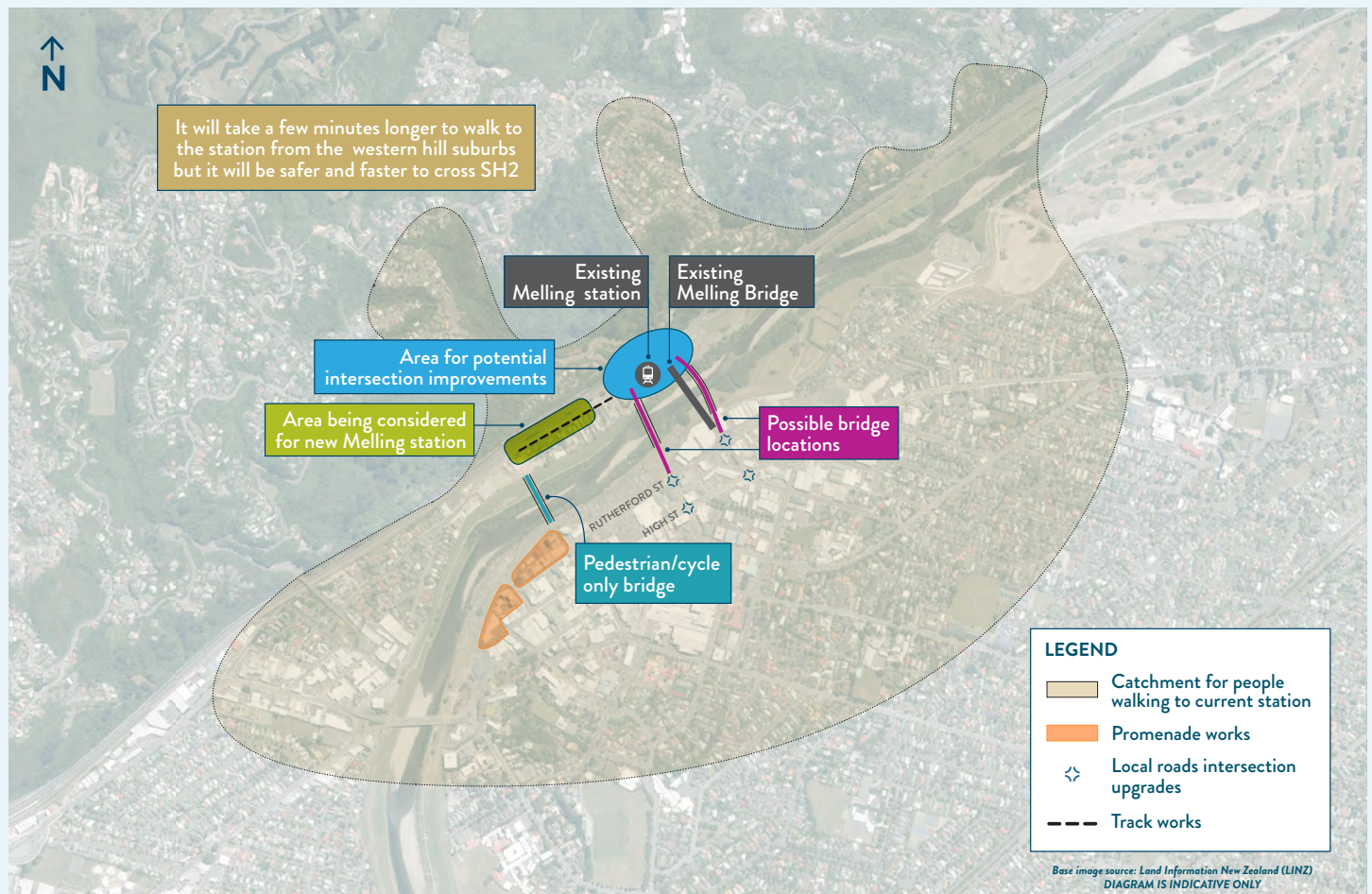
Shifting the railway station to the south was first signalled by the Hutt City Council in the 2009 Making Places Strategy. Moving the railway station would make the city centre more accessible and attractive to businesses and residents.

The New Zealand Transport Agency is working on ways to improve the Melling intersection and connections to the western hill suburbs. They are also exploring how these improvements could be integrated with new stopbanks and a new bridge into the city centre. Melling railway station would need to be moved in order for there to be space for any intersection improvements to be built.

“As part of RiverLink, we are investigating improvements to the Melling intersection. The present location of the Melling railway station limits our ability to improve safety and travel reliability on State Highway 2 and to improve access to the Lower Hutt city centre,” says Emma Speight, the Transport Agency’s Director Regional Relationship Manager – Lower North Island.

### What a new location offers

The station would need to move at least 250 metres and as much as 500 metres south of the current location. Moving the station would likely add 200 car parks, kiss and ride drop off spots, integrated bus and rail connections and better, safer access for cyclists and pedestrians. The added parking would help boost patronage numbers and fill some of the spare capacity currently available on the Melling line. RiverLink is exploring how to retain businesses currently near the station like coffee and childcare and attract more retail and residential development.



## ...What a new location offers (continued)

Shifting the station 250 metres south would avoid the intersection and ensure the station is not overshadowed by any future on and off ramps. People walking from Boulcott and the western hills would have a slightly longer journey but any intersection improvements would make it faster and easier to cross SH2. Overall, we expect the walk would take about the same amount of time as it does now.

If the station moved 500 metres south of the current station it would be just opposite the proposed pedestrian/cycle bridge into the city centre at Margaret Street. This location offers excellent access for people traveling to and from the city centre. The walk from the western hills would likely take a couple of minutes longer than it does now but it would be safer, faster and easier to cross

SH2. Moving the station would make little difference for people who currently travel to the station by bus or car but the intersection improvements would improve their journeys.

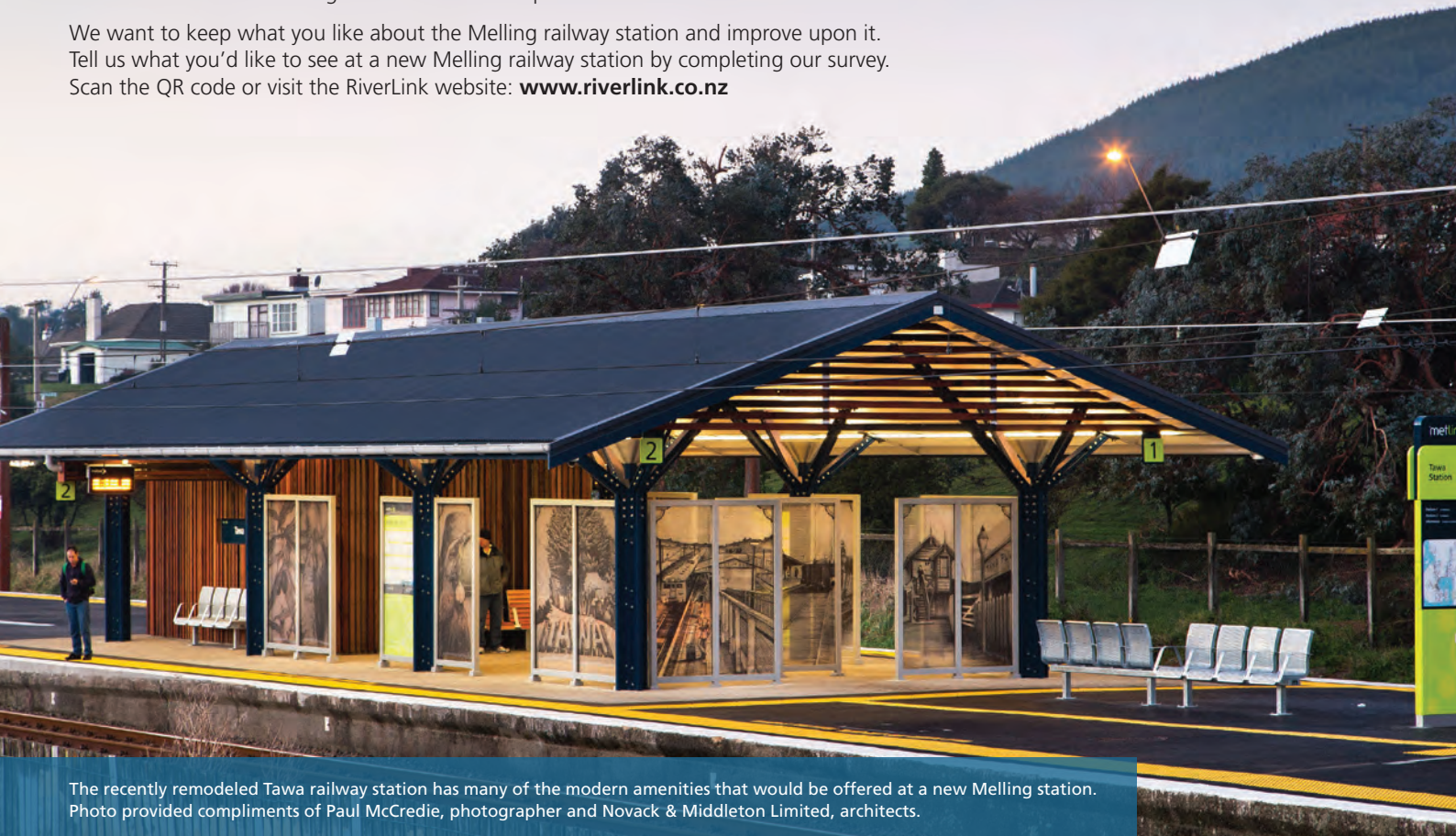
“A railway station near the pedestrian bridge would provide better access to the planned waterfront promenade, Queensgate, city centre bus stops, council offices, the Dowse Art Museum and High Street. We expect the promenade to offer restaurants, cafes and apartments for around 2,000 residents within a five to 10 minute walk of the new railway station and the city centre,” says Lower Hutt Mayor Ray Wallace.

Locating the station opposite the city centre would bring the Melling and Western Hutt railway stations closer together which could result in fewer people using the Western Hutt railway station and may impact train schedules.

## New Melling station would offer more amenities

Any new station would include typical modern amenities seen at remodelled railway stations like Tawa and Naenae. A station with good city centre access and park and ride facilities would seek to retain existing retailers and service providers and attract new businesses.

We want to keep what you like about the Melling railway station and improve upon it. Tell us what you'd like to see at a new Melling railway station by completing our survey. Scan the QR code or visit the RiverLink website: [www.riverlink.co.nz](http://www.riverlink.co.nz)



The recently remodeled Tawa railway station has many of the modern amenities that would be offered at a new Melling station. Photo provided compliments of Paul McCredie, photographer and Novack & Middleton Limited, architects.

## Talk to the project team

The RiverLink information container will be at the Melling railway station from 20-24 November. Members of the project team will be at the container to hear your thoughts on moving the Melling station and answer your questions. Please take the time to drop in, have a look at our plans and share your ideas. Check the schedule at [www.riverlink.co.nz](http://www.riverlink.co.nz).



Scan here to take our survey

Follow Greater Wellington Regional Council, Hutt City Council and NZ Transport Agency



For further information:  
[www.riverlink.co.nz](http://www.riverlink.co.nz)  
[info@gw.govt.nz](mailto:info@gw.govt.nz)  
or call (04) 384 5708  
or freephone 0800 496 734

